

EXCEPTIONAL FAMILY MEMBER PROGRAM (EFMP)(Updated July 2012)



The **EFMP** is a Department of the Army Program designed to assist active duty personnel during assignments/reassignments while sponsoring exceptional family members (EFM) with special medical and/or educational needs.

The Army will exert every effort to assign Soldiers to an area where the special needs of the exceptional family member can be accommodated, providing there is a valid personnel requirement for the Soldier's specialty and grade. All Soldiers will remain eligible for worldwide assignments.

An **Exceptional Family Member (EFM)** is any family member (child or adult) of an active duty Soldier, regardless of age, with any physical, emotional, developmental, or educational need that requires special treatment, therapy, education, training, or counseling on an on-going basis.

Concept: The EFMP, working in concert with other military and civilian agencies, is designed to provide a comprehensive, coordinated, multidisciplinary approach for medical, educational, community support, housing, and personnel-type services to families with special needs.

Enrollment/Update of Enrollment is accomplished by contacting the EFMP Clinic, Carl R. Darnall Army Medical Center (MEDCEN), (254) 288-8099. The enrollment packet and instructions will be provided.

An **EFMP Orientation** is conducted every other month on the 3rd Wednesday, at the Comanche Chapel, building 52024, 1230-1430, for EFMP sponsors and spouses newly assigned to Fort Hood, newly enrolled in the program, and those who need to update enrollments in the EFMP.

Enrollment is mandatory for active duty service members with an exceptional family member.

Updated by Brittany Cole on August 6, 2012.

EXCEPTIONAL FAMILY MEMBER PROGRAM QUESTIONS/ANSWERS

QUESTION: What is the purpose of the Army's EFMP?

ANSWER: The objective of the EFMP is to provide Soldiers with a means to identify to the Human Resources Command (HRC), family members who have physical, emotional or intellectual disorders, special education, and medical needs. The program enables assignment authorities to consider a family member's special needs during the assignment selection process.

QUESTION: How is enrollment accomplished?

ANSWER: MEDCEN Soldiers enroll through the local Army medical treatment facility, MEDCEN. Questionnaires are completed by the sponsor and a physician. The EFMP coding team then converts the information provided to codes and forwards it to the Personnel Assignment Branch.



QUESTION: Once a Soldier has completed the EFMP questionnaire, does he/she have any further responsibility for enrollment?

ANSWER: Yes, each sponsor has the overall responsibility for ensuring that adequate care is provided for his/her family member(s) which includes continued EFMP enrollment. The EFMP enrollment is permanent and an update of the family member's condition is required every 3 years or when significant changes occur in the medical or educational condition of the EFM.

QUESTION: Who identifies Soldiers for enrollment in the EFMP?

ANSWER: Generally, EFMs are identified through routine or normal medical care by MEDCEN physicians. The local school systems may also refer family members for enrollment. The Personnel Services Center (PSC) may identify Soldiers with EFMs during reassignment processing. Soldiers themselves may recognize the need for enrollment and self-refer for participation.

QUESTION: Has the enrollment process changed now that screening and enrollment in the EFMP is mandatory?

ANSWER: Soldiers will continue to be referred for enrollment when an EFM is identified by MEDCEN staff and community support agencies. Mandatory screening, however, requires all Soldiers on OCONUS orders to have medical records of all family members screened by MEDCEN EFMP staff prior to approval of family travel. Children,

ages 1-6, must be physically screened. Any EFM identified during screening will be processed for enrollment.



QUESTION: Will enrollment affect a Soldier's selection for promotion or school training?

ANSWER: No, EFMP information is not maintained in local or DA level files that are viewed by promotion or school selection boards.

QUESTION: What is the assignment policy for Soldiers in the EFMP?

ANSWER: Soldiers who are enrolled in the EFMP will receive recognition of their EFM's special needs as a factor to be "considered" during the assignment selection process. The HRC will consider assigning Soldiers to an area where the special needs of the EFM can be accommodated, provided there is a valid personnel requirement for the Soldier's grade and MOS. However, the EFMP does not guarantee that a Soldier will receive a command sponsored tour. If the Army Medical Department (AMEDD) and Department of Defense Dependent Schools (DODDS) cannot provide adequate services for the EFM, the Soldier may be required to serve an unaccompanied tour.

QUESTION: Can a Soldier's orders be changed because he is enrolled in the EFMP?

ANSWER: The EFMP alone is not a basis for deletion, deferment, or change of assignment. Soldiers have the responsibility to enroll in the EFMP prior to receipt of assignment instructions. Once the assignment instructions are issued, Soldiers may not be deleted or deferred solely for the purpose of enrolling in the EFMP.

QUESTION: If a family member's disability or medical problems cannot be handled at an overseas location, what are the Soldier's options?

ANSWER: The Soldier may accept a shortened, unaccompanied tour to an overseas location. He also has the option to request deletion, deferment, or a compassionate reassignment.

**IDENTIFICATION AND ENROLLMENT
(IAW AR 608-75)**

1. The following Soldiers with EFMs (children and adults) will enroll in the EFMP.

a. Active Army.

b. U.S. Army Reserve (USAR) Soldiers in the USAR-Active Guard Reserve (AGR) program and other USAR Soldiers on active duty exceeding 30 days.

c. Army National Guard AGR personnel serving under authority of Title 10, and Title 32, United States Code.

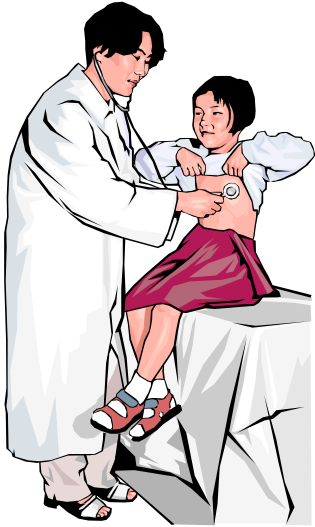


2. Participants in the EFMP are enrolled permanently in the program unless medical or special education needs warrant case closure or the Soldier is separated from the Army. Soldiers are responsible for keeping the medical and/or special education needs documentation current as EFM's condition changes or at least every 3 years, whichever comes first. Procedures for periodic update and termination of enrollment are contained in paragraph 1-7(3)b).

3. Soldiers who are members of the Army Married Couples Program will both enroll in the EFMP when they have a family member that qualifies. This process will ensure that the assignment manager of each sponsor considers the family's special needs.

4. Department of the Army Civilians will identify dependent children with special education and medically related service needs each time they process for an assignment to a location outside the United States where dependent travel is authorized at Government expense. Identification procedures are described AR 608-75, paragraph 1-7 (3) d.

**EXCEPTIONAL FAMILY MEMBER PROGRAM MEDICAL AND
EDUCATION INDICATIONS FOR ENROLLMENT
(IAW AR 608-75)**



1. Enroll Soldiers when:
 - a. Traveling to a new duty station with family members; and
 - b. Family members are eligible for health care and/or education at Government expense at the new duty station; and
 - c. A family member requires medical care above the level normally provided by a General Medical Officer or family practitioner in an outpatient clinic setting.

2. Enroll Soldiers who have family members with serious or chronic medical problems, physical disabilities, and mental health disorders. Indications of severity requiring enrollment are:

- a. Asthma (recurrent wheezing treated with any medication) within the past 5 years.
- b. Inpatient mental health services within the past 5 years.
- c. Any level of mental health services required at the present time or projected for the future.
- d. Attention Deficit Hyperactivity Disorder (ADHD) requiring treatment with more than 20 mg Ritalin (or equivalent) per day and with additional management requirements of pediatrician, mental health care provider, or counselor.

3. Enroll Soldiers who have family members that require intensive follow-up support (such as high risk newborns and patients with diagnosis of cancer within the past 5 years).

4. Refer for enrollment Soldiers who have family members that require special education services (including medically related services) that are specified on an Individualized Education Program from 3-21 years of age or early intervention services specified on an Individualized Family Service Plan from birth to 3 years of age.

EXCEPTIONAL FAMILY MEMBER PROGRAM CODINGS



Coding for the Fort Hood MEDECEN EFMP is conducted by an EFMP coding team at Brooke Army Medical Center (BAMC), Fort Sam Houston, San Antonio, TX. The MEDCEN EFMP Clinic forwards the completed Medical/Educational Summary to BAMC to initiate this process (the Medical/Educational Summaries are completed by the EFM's attending physician, the EFMP medical director, or the school that the EFM attends).

The coding team does not decide what the diagnoses are; they simply use the information given to them in the Medical and/or Educational Summary or from the screening summary and convert the worded diagnosis into numbers. The coding team assigns IDC codes and coding categories. This information is placed on disc and mailed to the EFMP office at Department of the Army (DA) and placed on a master database. The family member is officially enrolled in the Army's EFMP.

Exceptional Family Member Program coding attempts to match active duty Army Soldiers' assignments to locations where medical and educational services are available for their family members. Coding needs to be updated as changes occur or at least every 3 years.

CODING CATEGORY



1. A family member, age 15-21, who meet DODDS special education criteria for health/emotional impairment or receives more than 20% of their services under special educational eligibility for communication/learning impaired.
2. A preschool family member, age 3-4, who meets DODDS special educational criteria.
3. A preschool or school-aged family member who meets DODDS special education criteria and additionally requires a medical related service to benefit from their special education program.
4. A family member, newborn to age 4, with a handicapping condition who is at-risk for developmental delay.
5. A family member, any age, with a medical condition requiring care above the level of a general practitioner or family practice physician.

COMMON EFMP CONDITIONS

Attention Deficit Disorders Developmental Delays Hearing Impaired Nutrition and Metabolic Disorders Speech Impaired Autism Visual Impairment	Emotional Disorders Birth Defects Mental Retardation Mental Disorders Childhood Hyperactive Syndrome Heart Condition Cancer	Cerebral Palsy Epilepsy Asthma Orthopedically Impaired Leukemia Diabetes Sickle Cell Anemia Dyslexia
--	---	---

IDENTIFYING PERSONS' SPECIAL NEEDS

<p><u>MENTAL RETARDATION</u></p> <p>Impaired mental development.</p> <p><u>SPEECH AND LANGUAGE IMPAIRMENTS</u></p> <p>May experience problems with language (receptive or expressive). Problems with articulation, voice variations, stuttering.</p> <p><u>ATTENTION DEFICIT DISORDER</u></p> <p>May have difficulty with concentration, impulse control, and attention.</p> <p><u>PHYSICAL DISABILITIES</u></p> <p>May have cerebral palsy, scoliosis, multiple sclerosis, spina bifida, spinal cord injuries, or other conditions.</p> <p><u>HEARING IMPAIRMENTS</u></p> <p>May have permanent or fluctuating impairments which adversely affect educational performance, or may interfere with speech and language development.</p>	<p><u>MULTIPLE IMPAIRMENTS</u></p> <p>May have a combination of physical, emotional, and/or mental problems.</p> <p><u>LEARNING DISABILITIES</u></p> <p>May experience problems in collecting, sorting, storing, or expressing information which will interfere in the mastering of academic skills such as reading and writing. Dyslexia may be commonly identified in this category.</p> <p><u>EMOTIONAL DISABILITIES/ MENTAL ILLNESSES</u></p> <p>May be withdrawn, antisocial, depressed, schizophrenic, manic-depressive, or experience behavioral problems or conduct disorders.</p> <p><u>VISUAL IMPAIRMENTS</u></p> <p>May have partial or total loss of sight, may require special lenses, large print, or Braille.</p>
---	--

IDENTIFYING THE EXCEPTIONAL FAMILY MEMBER

A screening or an evaluation screening or evaluation for a family member should be considered if he or she:

- Frequently seems confused
- Doesn't talk or communicate as well as other children of the same age; especially important, if the child is 3 years or older
- Is very aggressive
- Has difficulty getting along with other children
- Cries frequently; has frequent temper tantrums
- Is physically inactive, lethargic
- Often prefers playmates much younger than him/herself
- Seems interconnected and clumsy
- Positions him/herself closely to the TV or other children, holds books close to his/her face
- Frequently crosses one or both eyes
- Squints and or rubs eyes frequently, or complains that eye(s) hurts
- Does not respond to voices or loud noises
- Talks in an unusually loud voice
- Stares blankly into space for several seconds at a time
- Has repetitious movements, like head turning or rocking, head banging, or holds the head in strained or awkward positions
- Has unusual skin colorations and/or sores
- Complains of backaches or pains in arms, legs, and/or joints
- Has problem that has affected him/her since birth and seems to interfere with development
- Is taking ongoing medication
- Has a medical condition that needs to be monitored
- Has any condition that concerns the caregiver, spouse, or parent: the family should be evaluated



None of these symptoms are an accurate indicator of an EFM, but they may be symptoms of an underlying problem.

Some Indications of Learning Disabilities

Has difficulty understanding and following directions
Words and letters are confused
Lack of coordination in writing, walking, sports
Easily distracted
Hyperactivity, excessive anger, nervousness
Does untidy work and makes careless errors
Has difficulty awaiting his/her turn in group situations
Has trouble remembering what someone just instructed him/her to do
Unable to play games for the same amount of time as other children of the same age group

CHILDTEAM

The CHILDTEAM or Early Childhood Intervention (ECI) is an early childhood intervention program, IDEA, PL 105-17. The CHILDTEAM provides early identification and screening; interdisciplinary assessments; individualized family service plans; case management; occupational therapy; physical therapy; speech therapy; special instruction; home visits and family education; health and medical support services including vision, hearing and nutritional services; social and psychological services; and respite care. Eligibility is 0-3 years of age with developmental delay requiring special services. At age 3, the local school district in which your child resides will conduct an assessment to determine appropriate school enrollment. There is no charge for CHILDTEAM services. For more information, contact CHILDTEAM at 254-547-7137, 699-2090, or 773- 6787.

EARLY CHILDHOOD DEVELOPMENT

Listed below are several milestones that your child should pass through as they mature. If you notice significant variations in your child's development from those listed, you might consider consulting with a pediatrician for further examination (ex: you notice that your child is 1 year old and as yet is unable to sit without support).

0-3 MONTHS

- Smiles responsively
- Follows an object that is brought to midline
- Responds to noise
- Begins to lift head when lying on stomach
- Takes weight on legs in standing with support





4-6 MONTHS

- Feeds self crackers
- Reaches for objects/people
- Brings hands together
- Turns head toward a voice
- Rolls over
- Pushes up on arms when on stomach
- No head lag when pulled to sit

7-9 MONTHS

- Bounces when placed in standing position
- Creeps on hands and knees
- Sits unsupported
- Begins to cruise around furniture
- Plays peek-a-boo
- Passes toy from one hand to the other
- Imitates speech sounds
- Pulls self to standing position
- Begins to wave bye-bye



10-12 MONTHS

Plays pat-a-cake

- Drinks from a cup
- Can hold very small item between fingers
- Says "Dada" or "Mama"
- Begins walking unassisted
- Can stand alone
- Uses kneeling and half-kneeling positions



During the first year

- Walks backward and sideways
- Creeps up/down stairs on knees
- Begins to name toys/people
- Imitates parents doing housework
- Begins to identify hair, eyes, ears, nose, and mouth
- Uses a spoon
- Scribbles spontaneously
- Combines words
- Kicks ball forward

During the second year

- Begins to run
- Walks up/down steps
- Jumps in place
- Catches ball with stiff arms
- Repeats rhymes/jingles
- Enjoys playing alone with toys
- Helps to dress self
- Plays interactive games
- Balances on one foot for 10 seconds
- Pedals a tricycle

During the third year

- Swings arms while walking
- Runs well
- Goes up/down steps in a step-over-step pattern
- Hops in place
- Dresses without supervision
- Understands cold, tired, and hungry
- Recognizes colors
- Balances on one foot for 1 minute
- Catches a bounced ball
- Walks backward
- Talks in short sentences

During the fourth and fifth years

- Hops on either foot
- Catches a tennis ball with bent arms
- Throws a ball overhand
- Shares and takes turns during play
- Understands meanings of simple words
- Speech is understood easily by others

CHILD AND YOUTH SERVICES
EFMP CHILDREN WITH SPECIAL NEEDS

Child and Youth Services (CYS) provides placement for children with special needs (asthma, behavior challenges, cancer, learning disabilities, mental retardation, vision and hearing impairments, diabetes, attention deficit disorder, etc.) in various programs. To ensure an appropriate program or service for your child, the following items must be reviewed prior to recommendation for placement by the EFMP Special Needs Resource Team (SNRT):

1. Current medical documentation - Medical Action Plan (MAP).
2. Individual Education Program (IEP) or Individual Family Service Plan (IFSP) for school-age children.

Please provide your documentation and a telephone number where you can be reached to the CYS Outreach Services Director, at 288-3189, Copeland Soldier Service Center, building 18010, room 209B.

The goal of this "family friendly" team is to share information that will ensure the success of your child's placement. You will be notified of the time and date of the meeting.

SANCTIONS (IAW AR 608-75)



Soldiers and DA civilians will provide accurate information as required by this regulation when requested to do so by authorized Army officials. Knowingly providing false information in this regard may be the basis for disciplinary or administrative action. Department of the Army civilians who refuse to provide such information will be denied the privilege of having their dependent children transported to the duty assignment outside the United States at Government expense. For Soldiers, refusal to provide information may preclude successful processing of an application for family travel or command sponsorship.

Commanders will take appropriate action against Soldiers who knowingly provide false information, or who knowingly fail or refuse to initially enroll in EFMP, and who knowingly and willfully disregard the 3-year anniversary to update review of the EFM condition. (A false official statement is a violation of article 107, Uniform Code of Military Justice (UCMJ)). These actions will include at a minimum, a general officer letter of reprimand. However, a letter of reprimand must be based on evidence that the Soldier willfully refused enrollment, knowingly provided false information either regarding special education or medical services or both, or disregarded the requirement to periodically update the condition of the family member (at least every 3 years).

The fact that a civilian employee has a dependent child with special education and medically related service needs cannot be the basis for nonselection for a position outside the United States.

However, knowingly providing false information or concealing such information may subject an employee to criminal prosecution and administrative disciplinary action.

Education for all Handicapped Children Act PL-457

This law:

1. Extends the rights given under PL 94-142 to all children ages 3 through 5 years who have disabilities.
2. Requires states to set up an early intervention program for children who need special services from birth through age 2.

Individuals with Disabilities Education Act, 1990 as amended, (20 U.S.C. 1400 et seq.), PL 101-476

This law:

Renames Education of the Handicapped Act (EHA) to the Individuals with Disabilities Education Act (IDEA).

2. Provides free educational and rehabilitation services for school-age children.

Public-Law 101-336 the 1990 Americans with Disabilities Act

This law focuses on the establishment of rights regarding access to employment, transportation, and public accommodations for individuals with disabilities.

Statutory and Department of Defense (DOD) Requirements

1. Section 921, Title 2a, United States Code, requires DODDS to provide programs designed to meet the special needs of students with disabilities in locations outside the United States.
2. Section 4151, Title 42, United States Code, requires certain federally owned, leased, or funded buildings and facilities to be accessible to persons with physical disabilities.
3. DOD Directive 1342.17, Family Policy, 30 December 1988, establishes policies, assigns responsibilities, and prescribes procedures on family policy for DoD personnel and their families.
4. DOD Instruction 342.12, Education of Handicapped Children in DODDS, 17 December 1981, establishes policies and procedures for providing a free appropriate public education for children with disabilities receiving or entitled to receive educational instruction from DODDS on a non-tuition paying basis. It also requires the military command responsible for medical care to provide medically related services to students with disabilities in DODDS.

REQUIRED MEDICAL SCREENING FOR FAMILY MEMBERS OF SOLDIERS ON OVERSEAS ASSIGNMENT

Medical screening of ALL family members is MANDATORY and must be completed before family travel will be approved. Soldiers must begin this medical screening immediately after their Reassignment Processing (Levy) interview.

WHAT TO DO:

Soldiers with no family members under the age of 6 years

Call MEDCEN, Central Appointments, 288-8888, to arrange a medical screening. Soldier or spouse brings medical records for ALL family members to this appointment. Soldier needs written permission from his/her spouse to sign out the spouse's medical records from the Outpatient Record Section of the hospital. It is not necessary to bring the family members at this time, only their medical records and the DA Form 5888 that is provided by the Levy Section.

Soldiers with children under the age of 6 (birth - 5 years)

Call MEDCEN, Central Appointments, 288-8888, to arrange for developmental screening. Bring the DA Form 5888, the immunization record, and the outpatient records of ALL family members to this appointment. Only the children under age 6 and one parent need to be present for the appointment.

Soldiers whose family members do not have outpatient medical records at MEDCEN

Call the MEDCEN EFMP Office at 254-288-8099 for further instructions.

WHO MUST DO THIS?

All Soldiers being reassigned overseas, whether or not he/she plans to apply for family travel.

WHAT HAPPENS IF A SOLDIER DOESN'T DO THIS?

If he/she deliberately fails to comply with the mandatory screening, he/she can be required to report overseas during his/her arrival month and to serve the "ALL OTHERS" tour.

WHY MUST A SOLDIER DO THIS?

The EFMP tells a Soldier's assignment managers if his/her family members have special physical, emotional, educational, developmental, or intellectual needs. Assignment managers working with EFMP can then determine if treatment or educational facilities exist at the projected assignment location. Even if his/her family members do not join him/her on this tour assignment, EFMP medical screening provides valuable management information for future assignments.

Exceptional Family Member Program and Relocating Families

The Department of Army requires that Army Community Service (ACS) ensures relocating Soldiers with exceptional school-aged children obtain the following information for transporting to the new school at their next duty station:

- Copy of Individualized Education Plan (IEP)
- Summary of Educational Activities and Performance for the current school year
- Medical and diagnostic records maintained by the school

If you do not already have a current copy of the above listed documents, one should be obtained from the administrative offices of the Special Education Department in your child's school district before you PCS.

When a service member receives notification reference a change in tour of duty, contact with the Fort Hood ACS Relocation Readiness Program should be initiated by calling 287-4471/4485 or by email at FHrelocation@hood.army.mil.

If you have a pinpoint assignment, you can obtain information about specific EFMP advocacy, cultural and recreational programs, and medical service providers prior to departure or arrival for your next assignment. For more information about relocation and the EFMP, contact the ACS EFMP Manager at 287-6070.

FOR PARENTS MOVING TO FORT HOOD, TEXAS

Parents of students with impairments or disabilities who will be attending either Copperas Cove Independent School District (CCISD) or Killeen Independent School District (KISD) should bring with them or send prior to enrollment, the following current or most recent appraisals:

- Educational records (include test scores)
- Intellectual records (include test scores)
- Vision and hearing screenings
- Shot records
- Vocational records for grades 8-12

PHYSICAL IMPAIRMENTS:

- Medical evaluation for each impairment (visual, auditory, physical)

MENTALLY RETARDED:

- Adaptive Behavior Report

EMOTIONALLY DISTURBED:

- Psychological appraisal signed by a psychologist or psychiatrist
- Behavior Management Plan

SPEECH AND LANGUAGE

- Evaluation report signed by a speech therapist

RELATED SERVICES:

- Evaluation report signed by licensed therapist for each of the related services required

RELOCATION TIPS:

- The following tips will assist in your relocation process.

Hand carry record files to include:

- Birth certificate
- Shot records
- Medical records from military as well as civilian treatment facilities
- School records (last report card, tests, transcripts)
- Psychological evaluations
- Physical, occupational, speech therapy evaluations
- Current and past Individual Education Plans (IEP)
- Behavioral/social evaluations
- Vocational evaluations (interests, skills, aptitudes)
- Correspondence (letters sent and received from school and medical officials)
- Bring the names, addresses and phone numbers of those professionals who are involved with the family member.

Hints for gathering record files:

- Request evaluation summary well in advance of last session for any therapy the family member is receiving.
- Contact civilian medical office to request a copy of medical records. A permission slip is usually needed before records are released.
- Be familiar with the accomplishments and needs of the family member. This will enable you to inform professionals of individual needs.
- Never give away your copy of any documents.

Upon arrival the sponsor should:

- Report to the Copeland Soldier Service Center, building 18010, for in-processing and post information.
- Report to ACS and the **EFMP Manager** for assistance in obtaining services needed and information on procedures.
- Contact the CYS School Liaison Officer at 288-7946/287-9905 for school information and the school administration office in the school district in which you have selected to reside to inform them that you have a school-age EFM.

School Districts

<p>Special Education Program Copperas Cove ISD 703 W Avenue D Copperas Cove, TX 76522 254-547-1227</p> <p>Special Education Program Temple ISD 200 N 23rd Street Temple, TX 76504 254-215-8473</p> <p>Special Education Program Lampasas ISD 207 W 9th Street Lampasas, TX 76550 512-556-8213</p>	<p>Special Education Program Killeen ISD 902 N 10th Street Killeen, TX 76541 254-501-0366</p> <p>Special Education Program Belton ISD 400 N Wall Street Belton, TX 76513 254-215-2000</p> <p>Special Education Program Florence ISD 306 College Avenue Florence, TX 76527 254-793-2850</p>
---	--

EDUCATION ORGANIZATIONS FOR ADVOCACY, INFORMATION, AND SERVICES

Advocacy/Information Center

Advocacy services for People with Developmental Disabilities
7800 Shoal Creek, Suite 171-E
Austin, TX 78757
512-454-4816 or 1-800-252-9108

Attention Deficit Disorders Association (ADDA)

12345 Jones Road, Suite 287-7
Houston, TX 77070
281-897-0982
<http://www.adda-sr.org>

National Information Center for Children and Youth with Disabilities (NICHCY)

P.O. Box 1492
Washington, D.C. 20013-1492
1-800-695-0285
www.nichcy.org

Parent Education Network

2070 Talbert Drive
Chico, CA 95928
530-893-0392
www.parented.org

Partners Resource Network. Inc. (PATH)

1090 Longfellow Drive, Suite B
Beaumont, TX 77706-4869
409-898-4684 or 1-800-866-4726

Partners for Opportunity, Development, Education, and Resources Project PONDER

1017 North Main Street
San Antonio, TX 78212
800-682-9747
Fax 201-222-2638

Specialized Training of Military Parents (STOMP)

6316 South 12th Street
Tacoma, WA 98465
253-565-2266 (voice/TDD) or 1-800-5 PARENT
Fax (253) 566-8052

Washington PAVE

6316 S. 12th St.

Tacoma, WA 98465

253-565-2266 or 1-800-5-PARENT

www.washingtonpave.org

Rights for Parents of Exceptional Children Attending Public Schools

1. The right of access to all recorded information about the child.
2. The right to refuse permission for a formal assessment of the child with the understanding that the local school may request a hearing to present its reasons to obtain approval to conduct the assessment.
3. The right to be fully informed of the results of a formal assessment and a description of how the findings of the evaluation are to be used, by whom, and under what circumstances.
4. The right to request that the school provide information about where an independent evaluation may be obtained.
5. The right to question proposed modifications of the regular instructional program for the child.
6. The right to request a hearing if dissatisfied with attempts by the school to resolve difference of opinion regarding the education of the child.
7. The right to a translator in order to accomplish any of the above if the primary language is not English.

Parents as Advocates

Parents of an impaired/disabled child must advocate, or become actively involved in their child's education. They need to ensure that their child receives the services and the assistance he or she needs. Because of frequent moves which involve new schools, new friends, new support groups, and new professionals to work with, this involvement becomes even more essential. It means that parents should hand-carry the school records with them when relocating. It means that parents insist that former IEP ensure that the gaining school services begin promptly. It means parents should make arrangements to talk with the counselor or principal as soon as they enroll their child at the new school, to ensure that everyone does what is best for the child.

If parents do not become involved, their child may not receive the services and guidance to which he or she is entitled. Parental sharing of information and working with school personnel establishes the foundation for academic success of your child.

ACS – EFMP Parent Education Advocacy Program (PEAP)

The PEAP is a program designed to train volunteers interested to serve as an advocate in the schools for children with special needs. The PEAP will offer information on the educational rights with Individualized Education Plans/Admission, Review, and Dismissals (IEP/ARD) and information on local, regional, state and national resources. Monthly workshops with guest speakers provide various topics dealing with school issues and the Individuals with Disabilities Education Act (IDEA).

TRICARE

TRICARE is the Department of Defense Health Care Program. The program has combined the best features from the Army, Navy, Air Force, and Champus Health care programs to create the TRICARE triple option - health care plan. Fort Hood is included in Region VI, Southwest.

There are three TRICARE options from which to choose:

- Prime
- Extra
- Standard

TRICARE Prime beneficiaries may enroll in TRICARE Prime which features:

- **Lower Costs**-No annual deductible and reduced co-payments.
- **Improved Access**-Enrollees have timely access to health care services. This includes a 24-hour Health Care Finder who can assist you in quickly obtaining health care services.
- **Enhanced Benefits**-Preventive health care benefits to keep you and your family healthy.
- **Less Paperwork**-Usually there are no claim forms to file.
- **A Primary Care Manager**-You select a Primary Care Manager (PCM) who will provide and/or coordinate all your health care needs
- **Point of Service**-The TRICARE Prime benefit also included a new point of service option which allows enrollees to retain freedom of choice to use providers without an authorization from the PCM, but at significantly higher cost sharing than TRICARE Standard.
- **A Quality Provider Network**-Access to a network of quality doctors, hospitals, and other health care providers usually near your home or work.
- **No Balance Billing**-TRICARE network providers accept the negotiated rates and your co-payment as payment in full.

TRICARE Extra-If you choose not to enroll in TRICARE Prime, you may still take advantage of cost savings by using the TRICARE Extra option. The TRICARE Extra option offers the following features when you use our TRICARE network providers:

- **Lower Costs**-Once the deductible has been met; your cost share will be 5% less than TRICARE Standard rates. You will also be able to take advantage of lower negotiated network provider rates.
- **No Enrollment Fees**-Unlike TRICARE Prime, you do not have to enroll, but you can still use the network health care providers on a case-by-case basis.
- **Less Paperwork**-Usually there are no claim forms to file.
- **Choice**-You have the choice of selecting your own health care provider.
- **No Balance Billing**-Network providers accept the negotiated rates and your cost share, after the appropriate deductible is met, as payment in full.

TRICARE Standard has been traditionally known as Standard CHAMPUS. This option offers our beneficiaries maximum choice in choosing their health care provider, but at the highest out-of-pocket cost to the beneficiary.

- **Flexibility**-You can use Standard or take advantage of cost-saving benefits under TRICARE Extra.
- **Continuity of Care**-No need to change providers if you have established a relationship with a TRICARE Standard Provider.
- **No Enrollment**-With your military ID card, you can easily enjoy the benefits of TRICARE Standard or Extra.
- For additional information, and TRICARE Triple Option cost, call our local TRICARE Service Center at 1-800-444-5445.

Nonavailability Statement (DD Form 1251):

- Issued by the Managed Care Division at MEDCEN.

DEERS Enrollment.

- All military families must be currently enrolled in the DEERS before any TRICARE claims will be paid. Enrollment is accomplished at the nearest personnel office.
- All newborn babies must also be enrolled in DEERS before any TRICARE claims will be paid.
- For questions concerning DEERS enrollment, call your unit personnel section. To verify your enrollment, call the DEERS Beneficiary Telephone Center for assistance at 1-800-538-9552.

Catastrophic CAP. See your local health benefits advisor, Managed Care Division or Beneficiary Services Representative, MEDCEN, Bldg 36019.

EXTENDED CARE HEALTH OPTION (ECHO)
(Formally Programs for Persons with Disabilities)

The ECHO is designed for family members of active duty service members who have a qualifying condition: Moderate or severe mental retardation, a serious physical disability, or an extraordinary physical or psychological condition of such complexity that the beneficiary is homebound. To be eligible, you must be enrolled in the EFMP. Call TRICARE for assistance or for additional questions (eligibility criteria, cost to service member, application process), at 1-800-447-8808.

**MEDICAL SUPPLIES, IN-HOME MEDICAL CARE,
AND HOME MEDICAL CARE AGENTS**

Medicaid and CIDC eligible patients for Diaper/Depend service, Ensure/Ensure plus, and certain types of catheters call:

Home Delivery Income Supplies (HDIS)
St Louis, MO
1-800-538-1036

- The supplies are of no cost to eligible patients.
- Other additional information on medical suppliers, please contact the TRICARE, ECHO office at 1-800-447-8808.

Medical Equipment and Supplies

<p>American Home Patient 2023 Everton Drive Temple, TX 76504 254-778-7956</p> <p>Scott & White Pharmacy 2500 Cross Dr Killeen, TX 76543 254-953-7777</p>	<p>Metroplex Medical Equipment 1002 East Elm Road Suite 102 Killeen, TX 76542 254-616-2632 1-800-598-1694</p> <p>Scott & White Clinic 2401 S. 31st Street Temple, TX 76508 254-724-2111</p>
--	--

Skilled Nursing

This service is available in the local area and requires a physician's referral.

Home Health Services

Concepts of Care

313 E Anderson Ln.
Austin, TX 78758
512-302-6200

Coryell Home Health

1507 West Main Street
Gatesville, TX
254-248-6380

Family Care Home Health

1002 E. Elms Rd, #111
Killeen, TX 76542
254-554-4049/1-888-778-1702

Heights Home Health

333 Indian Trail
Harker Heights, TX 76548
254-953-4702/1-800-282-6125

Hill Country Health Services Inc.

108 East FM 2410 Suite A
Harker Heights, TX 76548
254-554-3500

Interim Healthcare

8004 Woodway Dr
In Temple/Killeen
254-690-9394

Pediatric Services of America

800 Paloma Dr. Bld. 6 Suite 140
Round Rock, TX 78664
512-671-9600

Outreach Health Services

3500 HK Dodgen Loop
Temple, TX 76502
254-770-1156

Scott & White Home Health Care

2401 S. 31st Street
Temple, TX 76508
254-724-4090

Tender Kare

19 S. 25th Ste 500
Temple, TX 76502
254-778-2490

Texas Department of Human Services

315 E Ave D
Killeen, TX 76541
254-519-7500

Visiting Angels

3833 Franklin Ave.
Waco, TX 76712
254-772-8660

Supplemental Security Income/Medicaid for Individuals with Disabilities

Supplemental Security Income (SSI) is a program that pays monthly benefits to individuals with low incomes and limited assets who are 65 or older, blind, or have a disability. Children can qualify if they meet Social Security's definition of disability and if their income and assets fall within the eligibility limits.

The disability evaluation process generally takes several months. But the law includes special provisions for people (including children) signing up for SSI disability whose condition is so severe that they are presumed to be disabled. In these cases, SSI benefits are paid for up to 6 months while the formal disability decision is being made.

Following are some of the disability categories in which we can presume the child is disabled and make immediate SSI payments:

- HIV infection
- Blindness
- Deafness (in some cases)
- Down Syndrome
- Muscular Dystrophy (in some cases)
- Significant mental deficiency
- Diabetes (with amputation of one foot)
- Amputation of two limbs
- Amputation of leg at the hip

If these special payments are issued and later the SSI agency decides that the child's disability is not severe enough to qualify for SSI, the parents or sponsor may not be required to repay the payments received.

Medicaid and Medicare

1. Medicaid is a health care program for individuals with low incomes and limited assets. In most states, children who get SSI benefits qualify for Medicaid. In many states, Medicaid comes automatically with SSI eligibility. In other states, you must sign up for it. And some children can get Medicaid coverage even if they don't qualify for SSI. Check with your local Social Security office or your state or county social services office for more information.

2. Medicare is a Federal health insurance program for individuals 65 or older and for individuals who have been receiving Social Security disability benefits until they turn 18. No child can get Medicare coverage until he or she is 20 years old.

Other Health Care Services

If we decide a child is disabled and eligible for SSI, they may be referred to health care services under the Children with Special Health Care Needs (CSHCN) provisions of the Social Security Act. These programs are generally administered through state health agencies. Contact the Region 7, Texas Department of Health, 254-778-6744 for more information.

The CSHCN programs are known in the states by a variety of names, including Children's Special Health Services, Children's Medical Services, and Handicapped Children's Program. Even if your child is not eligible for SSI, a CSHCN program may be able to help you. Local health departments, social services offices, or hospitals should be able to help you contact your CSHCN program.

AREA HOSPITALS
All Treatment Must Be Authorized By TRICARE.

Capital Area Mental Health

1106 Lane
Austin, TX 78723
512-302-1000

Services: Psychiatric treatment

Carl R. Darnall Army Medical Center

Bldg 36000
Fort Hood, TX 76544
254-288-8000 (information)

Services: Medical evaluations and treatment - inpatient/outpatient. Referral services. Referral for comprehensive medical treatment to Brooke Army Medical Center, San Antonio, TX (approximately 3 hour one-way trip by hospital shuttle bus or EFMP wheelchair accessible bus).

King's Daughters Hospital

1901 SW H.K. Dodgen Loop
Temple, TX 76504
254-298-2400

Services: Medical evaluation and treatment. Referral services.

Laurel Ridge Psychiatric Hospital

17720 Corporate Woods Drive
San Antonio, TX 78259
1-800-624-7975

Services: Comprehensive psychiatric care - inpatient/outpatient.

Metroplex Hospital

2201 S Clear Creek Road
Killeen, TX 76549
254-526-7523

Services: Medical evaluation and treatment

Metroplex Pavilion

2201 Clear Creek Road South
Killeen, TX 76549
254-628-1000
24-hour help line 254-628-7100

Services: Comprehensive psychiatric care treatment, inpatient and outpatient, and chemical dependency

Millwood Hospital

1011 North Cooper Street
Arlington, TX 76011
1-817-261-3121

Services: Comprehensive facilities providing mental health and chemical dependency care for individuals of all ages.

Scott and White Memorial Hospital

2401 S. 31st Street
Temple, TX 76508
254-724-2111

Services: Comprehensive major medical services, inpatient and outpatient, pediatric-adolescent, psychiatric treatment, substance abuse treatment.

Shoal Creek Hospital

3501 Mills Avenue
Austin, TX 78731
512-924-2080

Services: Comprehensive psychiatric treatment - inpatient and outpatient, and chemical dependency.

MENTAL HEALTH-MENTAL RETARDATION SERVICES (MHMR)

Counties Served: Bell, Coryell, Hamilton, Lampasas, Milam. Address: 304 S. 22d St, Temple, TX 76503; call 254-778-4841 or 254-298-7000

Mental Health Services:

- 24-hour emergency screening/crisis stabilization service
- Community-based crisis residential services/hospitalization
- Community-based assessments
- Family support services
- Case management services
- Medication-related services
- Substance abuse services

Community-based Crisis Residential Services/Hospitalization - Gateway Residential Unit. Address: 211 N. Lutterloh, Gatesville, TX 76528; call 254-865-5844

Central Counties Center for MHMR Services - 100 East Ave. A, Killeen, TX 76541; call 254-526-4146

Central Counties Center for MHMR Services - 1012 North Drive, Copperas Cove, TX 76522; call 254-547-5914

Psychosocial Rehabilitation Services

- Club Genesis, 2718 Lavendusky, Temple, TX 76503
- Club Phoenix, 211 N. Lutterloh, Gatesville, TX 76528
- Club Phoenix, 11 N. 2d St., Temple, TX 76501
- Club Phoenix, 1916 Rev. R. A. Abercrombie Dr., Killeen, TX 76543

Mental Retardation Services:

- Transition planning services
- Health/professional services
- Consumer and family determined services
- Service management services
- Early Childhood Intervention Services-Childteam, 618 N. Main, Temple, TX 76501; call 254-773-6787
- Home and community-based services, 304 S. 22d St., Temple, TX 76503; call 254-778-4841 or 254-298-7000
- Employment/vocational services, 3401 Range Road, Temple, TX 76503; call 254-778-9255

TEXAS ORGANIZATIONS FOR TREATMENT, INFORMATION, AND SERVICES

NAME: Cedar Crest Residential Treatment Center

ADDRESS: 3500 S. IH 35, Belton, TX 76513

PHONE: 254-939-2100

ELIGIBILITY: Ages 4-17 years, emotional disturbance

SERVICES: Residential psychiatric treatment services for children and adolescents with emotional and behavioral problems.

NAME: Children's Special Needs Network Center

ADDRESS: 2000 Marland Wood Rd., Temple, TX 76502

PHONE: 254-778-6785

ELIGIBILITY: Ages 0-14 years, physically handicapped, and developmentally delayed.

SERVICES: Outpatient physical, occupational, and speech therapy.

NAME: Crisis Cole Rehabilitation Center

ADDRESS: Austin, TX 78701

PHONE: 512-377-0300

ELIGIBILITY: Clients of Texas State Commission for the Blind, legally blind, and a resident of Texas.

SERVICES: Orientation and mobility instruction; communication skills-Braille, typing, handwriting, listening, and abacus; home and personal management; minor sewing; house cleaning; cooking; grooming; hygiene; shop and crafts; home maintenance; utilization of tools; woodworking; and group and individual counseling. Free to Texas residents.

NAME: Child and Adolescent Psychiatry Evaluation Services (CAPES)

ADDRESS: Carl R. Darnall Army Medical Center, 5W, Fort Hood, TX 76544

PHONE: 254-288-8000

SERVICES: Psychiatric Counseling Services, outpatient. Referral Services.

NAME: Oak Grove Treatment Center

ADDRESS: 6436 Mark Dr., Burleson, TX 76028

PHONE: 817-483-0989

ELIGIBILITY: Determined by center

SERVICES: Residential treatment for children and adolescents with emotional-behavioral problems.

NAME: Texas Department of Health, Region I

ADDRESS: WIC 213 W Avenue D., Copperas Cove, TX 76522

PHONE: 254-547-9571

ELIGIBILITY: Determined by Health Department.

SERVICES: Chronically Ill and Disabled Children Service (C.I.D.C.), health screening and risk appraisals, immunizations, and multiple health services.

NAME: Texas Department of Protective and Regulatory Services

ADDRESS: 331 Indian Trail, Harker Heights, TX 76548; 317 Casa Drive, Copperas Cove, TX 76522; 2500 North Main Street, Belton, TX 76573

PHONE: 254-690-1312 (Harker Heights); 254-547-4286 (Copperas Cove); 254-939-3561 (Belton)

ELIGIBILITY: Determined by agency.

SERVICES: Community care for aged and disabled. Medicaid eligibility evaluation. Protective resource assessment for nursing home placement. Aid to families with dependent children (AFDC) and food stamps.

NAME: **Texas Lions League for Crippled Children, Inc.**

ADDRESS: P.O. Box 247, Kerrville, TX 78029-0247

PHONE: 830-896-8500

ELIGIBILITY: Must be legally blind, Ages 7-17 years old

SERVICES: Visually handicapped, deaf/blind, hearing impaired, and orthopedically handicapped. This is a 2-week summer camp.

NAME: **Texas Rehabilitation Commission**

ADDRESS: 604 S. Gray St., Killeen, TX 76541

PHONE: 254-634-2618

ELIGIBILITY: Physical, emotional, intellectual impairment significantly affecting the individual's ability to secure employment.

SERVICES: Services to Bell, Coryell, Hamilton, Lampasas, Milam, Mills, and San Saba Counties. Provides a full range of evaluation, training, guidance, equipment, and transportation services focused upon gaining employment.

NAME: **Texas School for the Blind and Visually Impaired**

ADDRESS: 1100 West 45th St., Austin, TX 78756

PHONE: 512-454-8631

ELIGIBILITY: Blind or severely visually impaired, ages 5-21 years.

SERVICES: Residential facility for preschool-high School, individualized instruction, vocational training. Free to Texas residents.

NAME: **Texas State Library (Talking Book Program)**

ADDRESS: P.O. Box 12927, Capitol Station, Austin, TX 78711

PHONE: 1-800-252-9605

ELIGIBILITY: Blind, visually impaired, and physically handicapped.

SERVICES: Books, periodicals, magazines in large print, Braille, cassettes, talking books records, reel-to-reel tapes, and free equipment.

NAME: Relay Texas

ADDRESS: 1321 Rutherford Lane Suite 120, Austin, TX 78753

PHONE: Texas Communications Relay Services. TTY is 1-800-735-2989. Voice is 1-800-735-2988.

ELIGIBILITY: Works for a caller who is deaf or speech impaired, using a telecommunication device for the deaf (TDD).

SERVICES: A listing of residential numbers nationwide, hotels with products for the hearing impaired (smoke detectors, TV decoders, telephone and doorbell signalers), the GTE Phone Mart, business listings, and government office listings are available in the Casey Memorial Library EFMP Resource Section.

NAME: Kidz Therapeze

ADDRESS: 1102 Winkler Ave., Killeen, TX 76542

PHONE: 634-8505

NAME: MetroKids Pediatric Rehabilitation Center

ADDRESS: 2300 S Clear Creek Rd., Killeen, TX 76549

PHONE: 254-680-5437

SERVICES: Occupational therapy, speech and language, physical therapy and rehabilitation.

American Cancer Society

1700 Lake Success Drive Waco, TX 7610

Waco, TX 76710

254-753-0806 or 254-753-0544

www.cancer.org

American Heart Association

6801 Sanger, Suite 102

Waco, TX 76710

979-268-0068

Fax 299-0881

www.americanheart.org

Arthritis Foundation

4300 Macarthur Ave. #245

Dallas, TX 79520

214-826-4361

800-442-6653

Fax 214-824-5842

www.arthritis.org

Counseling and patient education, equipment loans, patient group, brochures, and newsletters available free.

Autism Society of Greater Austin

512-528-0011

Child Abuse Hotline

1-800-252-5400

www.kidsafe-caps.org

Child Team

618 North Main Street

Temple, TX 76501

Main #: 254-773-6787

Harker Heights: 254-699-2090

Copperas Cove: 254-547-7137

Cancer Information Services of Texas

1-800-422-6237

www.cancer.org

Centroplex Chapter of the American Diabetes Assoc.

1-800-252-8233

www.diabetes.org

Cystic Fibrosis Foundation

4606 Centerview, Suite 101

San Antonio, TX 78228

1-800-252-8233

www.cff.org

Written materials, information and referral, coordination of medical care, and help in obtaining medical equipment.

Goodwill Industries

4004 E. Stan Schlueter Loop

Killeen, TX 76542

254-634-4287

Provides rehabilitation, employment, and training for a variety of disabled individuals.

Heart of Texas Hospice

www.hospiceaustin.org

Medical care and counseling services for a terminal diagnosis patient whose life expectancy is limited. Must have physician's referral, and must have relative or friend to assist patient in the home.

Mental Health Mental Retardation Services

Temple, TX	254-298-7000
Killeen, TX	254-628-8484
Copperas Cove, TX	254-547-5914
Gatesville, TX	254-865-5844
Crisis Phone	800-888-4036

www.mhmr.state.tx.us

Ronald McDonald House

2415 South 47 St
Temple, TX 76504
254-770-0910

www.rmhc.com

A home-away-from-home, a temporary lodging facility for the families of seriously ill children being treated at nearby hospitals. There are 150 Ronald McDonald houses in nine countries. All totaled, more than 2,200 bedrooms are available for families, serving some 4,000 family members each night. Each house is run by a local non-profit agency comprised of members of the medical community, McDonald's owners, businesses, civic organizations, and parent volunteers.

Fisher House

36000 Darnall Loop
Ft. Hood, TX 76544-4752
254-286-7927

www.fisherhouse.org

During a medical crisis the Fort Hood Fisher House is a "home away from home" for military personnel (both active and retired) and their families. The house has a warm, compassionate environment where families and caring friends can nurture one another in times of need. Seven private rooms with private baths, handicapped accessible, common kitchen and laundry room, large family room, community dining room.

Scottish Rite (Learning Center)

508 West 14th Street
Austin, TX 78701
512-472-7247

Social Security

511 North Main Street
Temple, TX 76501
866-593-1341

www.ssa.gov

Texas Association for Retarded Citizens

1600 West 38 St.
Austin, TX 78731
512-454-6694
www.thearc.org

Texas Commission for the Blind

7517 Cameron Road
Austin, TX 78752
512-459-8575
www.tb.state.tx

Offers services for the totally blind, legally blind, visually impaired, mentally retarded blind, and more with health counseling, educational, recreational, rehabilitation, computer training, and professional training services.

Texas Department of Health Handicapped Children

1100 West 49th St.
Austin, TX 78756
512-458-7355
www.lib.utexas.edu

Texas Department of Health - Bureau of Long Term Care

1-800-228-1570

Texas Department of Mental Health and Mental Retardation

909 W. 45th Street
Austin, TX 78751
512-454-3761 or 1-800-252-8154
www.mhmr.state.tx.us

Offers information and referrals.

Texas Developmental Disability Council

6201 E. Oltorf, Suite 600
Austin, TX 78741-7509
Phone: (512) 437-5432

Texas Education Agency - Child Service

1-800-252-9668
www.tea.state.tx.us

Information and referral for handicapped 0-21 years of age and current or potential Texas resident.

Texas Governor's Committee for Disabled Persons

4900 North Lamar Blvd
Austin, TX 78701
512-463-5739

Texas Independent Living Centers:

Center for the Retarded Inc – Supported Living

3230 South Gessner Road
Houston, TX 77063
713-952-1895

Handicapped Student Services Office- University of Texas at Arlington

Arlington, TX 76001
817-272-3323

Offers attendant care registry, peer counseling, and referral services.

Houston Center for Independent Living

7000 Regency Square # 160
Houston, TX 77036
713-974-4621

Information on accessible housing, advocacy services, and peer counseling.

Independent Living Residential Utilization Project at the Institute for Rehabilitation and Research

2323 S Sheppard, Suite 1000
Houston, TX 77019
713-520-0232

Offers support and informational groups.

Panhandle for Independent Living Center

1118 South Taylor Street
Amarillo, TX 79101
806-374-1400
806-374-2774 - TTY

Offers peer counseling, attendant care registry, and information on accessible housing.

REACH of Dallas ILC

8625 King George Drive, Suite 210
Dallas, TX 75235
214-630-4796

Information & referral services, peer counseling, skills, and training.

Crockett Resource Center for Independent Living

1020 Loop 304 E
Crockett, TX 75835
936-544-2811
Organization serving persons with all types of disabilities.

Austin Resource Center for Independent Living (ARCIL)

301 Hesters Crossing, Suite 210
Round Rock, TX 78681
512-828-4624
www.arcil.com

Texas Planning Council for Developmental Disabilities

6201 E Oltorf, Suite 600
Austin, TX 78751
512-424-5432

Texas Protection and Advocacy Services for Disabled Persons

Advocacy, Inc.
7800 Shoal Creek Blvd, Suite 171-E
Austin, TX 78757
1-800-252-9108 or 512-454-4816

Texas Rehabilitation Commission Library

Austin, TX 78701
512-424-4240

Houses a collection of books, audio and video tapes, and periodicals focusing on rehabilitation, disabilities, employment skills, practices, and management.

Texas State Library

P.O. Box 12927
Austin, TX 78711
1-800-252-9605 or 512-463-5458

Summer reading programs, Braille writer, magnifiers, closed-circuit TV, large print photocopier, cassette books and magazines, children's books on cassette, home visits, and other reference materials on blindness and other handicaps.

Texas Vocational Rehabilitation

Texas Rehabilitation Commission

4900 North Lamar, Austin, TX 78701
512-424-4000

Transitional Learning Community

1528 Post Office Street
Galveston, TX 77550
1-800-TLC-Grow

Texas Vocational Rehabilitation for the Blind

Texas Commission for the Blind
7517 Cameron Road
Austin, TX 78752
512-459-8575

University of Texas at Austin

10100 Burnett Road
Austin, TX 78758
512-495-4644

Library services for people with disabilities.

SUPPORT GROUPS

ADHD (Attention Deficit Hyperactivity Disorder) - meets 2nd and 4th Tuesday, 1830, at the Associates in Counseling & Development, 1005 South 19th St., Killeen, TX, call 542-3198.

Alzheimer's Support Group - meets 2nd Wednesday, 1400, at the VA Hospital Nursing Home Care Unit in Temple, TX. Contact Karen Houston at 254-778-4811, ext. 5286.

Anxiety/Stress/Panic Management Support Group - meets 2nd and 4th Monday, 1915, at DePaul Center in Waco, TX. Contact Mary Cantrell, at 254-772-0297; or Dee Blinka, at 254-772-0297.

Association for Retarded Citizens (ARC) (Bell County ARC) - meets last Tuesday, 1900, in Gober Party House, Temple, TX. Contact Margie Powell, at 254-778-7054 or Margaret Wright, at 254-780-2102.

Better Breathing Clubs- meet 3rd Thursday of each month at Scott and White STC Physical Therapy Dept at 2402 S. 31st St. Temple, TX. Call 254-724-4066

CAPES (Child and Adolescent Psychiatry Evaluation Services) - meets on four consecutive Tuesdays 1615-1730 at Carl R. Darnall Army Medical Center on the 5th floor. Group is for children and parents, who meet separately.

Compassionate Friends - meets 1st Thursday, 1900, at the First Presbyterian Church, Copperas Cove, TX, for families/siblings of children who have died; call 254-542-8230.

Cystic Fibrosis Family Support Group - for information call 254-771-3276.

Epilepsy Support Group - meets 3rd Wednesday, 1900, at 4401 Barrows Street, Austin, TX. Contact Allen Parrish at 512-452-7042.

Diabetes Support Group- meets every 3rd and 4th Monday at Casa Ole 2730 E. Hwy 190 Copperas Cove. Call 254-542-5171.

Exceptional Families Support Group - meets 4th Monday of each month 1800 – 2000 at Comanche Chapel, building 52024, Tank Destroyer Blvd. Contact the EFMP office at 287-6070.

HIV Positive Support Group - meets 3d Tuesday, 1900, at Grace Presbyterian Church, Temple, TX. Call 254-774-3210; or Scott and White Social Work, at 254-774-2771.

SUPPORT GROUPS

Killeen-Cove-Hood Special Olympics and Family Support Group - meets 4th Monday, 1900, 902 Conder, Killeen, TX; call 254-699-3479, Fax 254-699-2534
jkilpatrick@sotx.com

Multiple Sclerosis Support Group - meets 2nd Tuesday, 1900, at the Waco Rehabilitation Institute, Waco, TX, 254-776-0591 or 881-5971; meets 3rd Tuesday, 1900, at Scott and White Santa Fe Center Osborne Room, Temple, TX, 254-939-6627 or 254-774-2111.

Multiple Sclerosis Support Group - meets 3rd Tuesday, 1800, at the Robertson Avenue Baptist Church, 305 E. Robertson Ave., Copperas Cove, TX 76522, 254-287-6070 or Peggy Muller at (254) 542-5465.

Exceptional Family Member Program Support Groups (Mental Health, Autism, Down Syndrome and Attention Deficit Disorder) – meets the 2nd Wednesday of the month at 1800 at the Lane Volunteer Center, Building 16005 on the coner of T.J. Mills Boulevard and Old Ironsides Ave. Workshops for children ages 5 and up also during this time.

Pediatric Easy Breathers Club/Support Group - meets 3rd Tuesday, 1900, at the Options for Living Center at Scott and White Hospital, Temple, TX; call 254-724-5504.

Sickle Cell Anemia Support Group - meets four times a year. For information call 254-778-9233.

Stroke/Traumatic Brain Injury Support Group - members are being screened by Dr. Holden, Psychology Services, Community Mental Health, Bldg 204, Fort Hood, TX; call 287-7631.

***NATIONAL ORGANIZATIONS FOR ADVOCACY, DISABILITIES,
INFORMATION, AND SERVICES***

Association of People with Disabilities

1819 H. Street N.W.
Washington DC 20006
202-457-0046
800-840-8844

Administration for Children, Youth and Families

1250 Maryland Ave. Southwest
Washington, DC 20447
202-205-8347

Advocacy/Information Centers

Advocacy Inc., Services for People with Developmental Disabilities
7800 Shoal Creek, Suite 171-E
Austin, TX 78757
512-454-4816 or 1-800-2529108

Alexander Graham Bell Association for the Deaf. Inc.

3417 Volta Place, NW
Washington, DC 20007
202-337-5220

AMC Cancer Research Center Hotline

1-800-525-3777

American Cancer Society, Inc.

1599 Clifton Road, NE
Atlanta, GA 30329
1-800-ACS-2345 or 404-320-3333

American Cleft Palate Association

104 South Estes Drive, Suite 204
Chapel Hill, NC 72514
1-800-24-CLEFT

American Diabetes Association, Inc.

National Service Center

1701 Beauregard
Alexandria, VA 22311
1-800-ADA-DISC or 703-549-1500

American Printing House for the Blind

1839 Frankfort Ave., P.O. Box 6085
Louisville, KY 40206
502-8952405

American SIDS Institute

528 Ravenway Maple, Florida 39110
1-800-232-SIDS

American Society for Deaf Children

P.O. Box 3355
Gettysburg, PA 17325
www.deafchildren.org
1-800-942-2732

American Speech-Language-Hearing Association

10801 Rockville Pike
Rockville, MD 20852
1-800-638-8255 (Voice/TDD)
www.asha.org

Amputees' Service Association Hotline

PO Box A8319
Chicago, IL 60690
312-583-3949

Architectural Access Board

Suite 1000, 1331 F Street NW
Washington, DC 20004
202-272-5434

Offers information on architectural accessibility for disabled persons.

Arthritis Foundation

1330 West Peachtree Street
Atlanta, GA 30309
404-872-7100

Association for Children with Down's Syndrome, Inc.

4 Fern Place
Plainview, NY 11803
516-933-4700

Asthma and Allergy Foundation of America

1233 20th Street NW Suite 402
Washington, DC 20036

www.aafa.org

1-800-932-2232

Asthma and Allergy Network/Mothers of Asthmatics, Inc.

8201 Greensboro Dr Suite 300
McLean, VA 22102
Fairfax, VA 22031
1-800-878-4403

Autism Society of American

7910 Woodmont Avenue Suite 300
Bethesda, MD 20814-3067

www.autism-society.org

1-800-328-8476

Blind Children's Center

www.blindkids.org

1-800-222-3566

Christian Education for the Blind Inc.

7205 Church Park Drive
Fort Worth, TX 76133
817-923-0603

Consortium on Children's Asthma Camps

490 Concordia Avenue
St. Paul, MN 55103
651-8014

www.asthmacamps.org

Council for Exceptional Children

1110 North Glebe Road, Suite 300
Arlington, VA 22201
703-243-0446

Cystic Fibrosis Foundation

6931 Arlington Road
Bethesda, MD 20814

www.cff.org

1-800-FightCF

Disabled and Alone Life Services for the Handicapped Inc.

352 Park Ave.
New York, NY 10010
212-532-6740

Easter Seal Society

1611 Headway Circle Bldg 2
Austin, TX 78754
512-478-2581
www.easterseals.com

Epilepsy Foundation

8301 Perfotional Place East Maryland
Landover, MD 20785
301-459-3700

Federation for Children with Special Needs

Track Center 1102 Suite, 1M3
Charles Town, MA 02129
617-236-7210

Guide Dogs for the Blind, Inc.

350 Los Ranchitos Road
San Rafael, CA 94903
415-499-1000
800-295-4050

Offers educational materials, transportation, seminars, and newsletters for the blind.

Goodwill Industries International

9200 Rockville Pike
Bethesda, MD 20814
301-530-6500

Strives to achieve the full participation in society of disabled persons and other individuals with special needs by expanding their opportunities and occupational capabilities through a network of 179 autonomous, nonprofit, community-based organizations providing services throughout the world in response to local needs.

Health Resource Center

George Washington University
2134 G. Street N.W., Suite 221
Washington, DC 20052
202-994-8770
800-544-3284

National clearinghouse on post-secondary education for individuals with disabilities.

Institute for Urban Family Health, Inc.

16 East 16th Street
New York, NY 10003
212-633-0800

Juvenile Diabetes Research Foundation International

120 Wall Street, 19th Floor
New York, NY 10005
212-785-9500

Offers workshops, educational materials, and seminars.

Medescort International, Inc.

1730 Vultree Street
Allentown, PA 18103
1-800-255-7182 or 610-791-3111

Offers specially trained escorts for individuals who cannot travel alone due to age or disability.

Medic-Alert Foundation

2323 Colorado Ave.
Turlock, CA 95382
209-668-3333
1-800-432-5378

Emergency equipment, medallions, and bracelets containing emergency medical information and 24 hour emergency information telephone services.

Mental Health Association

1000 Twinbrook Parkway
Rockville, MD 20851
301-279-7605

Multiple Sclerosis Foundation

6350 North Andrews Ave.
Fort Lauderdale, FL 33309
954-776-6805
1-800-441-7055

Contemporary national, nonprofit organization that provides free support services and public educational for persons with MS. Quarterly newsletters, toll-free phone support, grants for research, information and referrals. Mobility equipment program also exists.

National Association of the Deaf

814 Thayer Ave.

Silver Spring, MD 20910
301-587-1788

Focuses on grassroots advocacy and empowerment, captioned media, deafness-related information and publications, legal assistance, policy development and research, public awareness, and youth leadership development.

National Association for the Visually Handicapped

22 West 21st St.
New York, NY 10010
212-889-3141

Serves the partially seeing with informational literature, newsletters for adults and children, information and referral, and counsel and guidance. Works with eye care professionals and business community regarding abilities for the partially seeing.

National Association of Developmental Disabilities Center

1234 Massachusetts Ave. NW, Suite 103
Washington, DC 20005
202-347-1234

National Ataxia Foundation

15500 Wayzata Blvd. #750
Wayzata, MN 55391
612-473-7666

Organization combating all types of hereditary Ataxia through education, service, and research program.

National Center for Stuttering

200 East 33rd Street
New York, NY 10016
212-532-1460

Provides callers with information, referrals, and educational resources to parents of children who stutter and to speech therapists.

National Hemophilia Foundation

116 West 32nd Street, Soho Building
New York, NY 10001
212-378-3700

Offers counseling, educational materials, fund raising, loans, seminars, and support groups with 48 local chapters.

National Information Center for Children and Youth with Disabilities

P.O. Box 1492
Washington, DC 20013

1-800-695-0285 or 703-893-6061

Provides free information to assist parents, educators, caregivers, advocates and others in helping children and youth with disabilities become participating members of the community.

National Kidney Foundation

2233 Wisconsin Ave. NW
Washington, DC 20007

Offers a patients' medication bank, support groups, educational seminars, and patients' emergency funds.

National Library Service for the Blind and Physically Handicapped

The Library of Congress
Washington, DC 20001
202-727-2142

This association publishes books and magazines in Braille and in recorded form for visually or physically handicapped persons. The materials are loaned free to eligible readers through a national network of state and local libraries.

National Multiple Sclerosis Society

733 3rd Ave
New York, NY 10017
212-986-3240

Provides professional and public education; information and referral; and supports research. Offers counseling services, advocacy, discount prescription and health care products program, and assistance in obtaining adaptive equipment.

National Office of Family Voices

3411 Candelaria NE, Suite M
Albuquerque, NM 87107
505-872-4774
888-835-5669
www.familyvoices.org

National Organization for Rare Disorders

P.O. Box 8923
New Fairfield, CT 06812
1-800-999-6673 or 203-746-6518

A nonprofit, voluntary agency composed of national health organizations, scientific researchers, physicians, and individuals dedicated to the interests of people concerned about rare debilitating disorders.

National Organization on Disability

910 16th St. NW, Ste 600
Washington, DC 20006
202-293-5960

The purpose is to increase the acceptance and participation in all aspects of life of all men, women, and children with physical or mental disabilities.

Orton Dyslexia Society

Townson, MD 21204
401-825-2881

Disseminates information and connects individuals with appropriate professionals.
Provides 33 local chapters and serves 7,500 members worldwide.

Recording for the Blind, Inc.

20 Roszel Road
Princeton, NJ 08540
609-452-0606

Offers newsletters, supplies, and taped books free on loan to registered borrowers.

Siblings or Significant Change

3505 Avenue
New York, NY 10001
212-643-3257

Provides peer support, legal assistance, and psychological counseling to siblings of the handicapped. Coordinates social activities for families with handicapped members and works on projects and audiovisual programs designed to increase national awareness of the difficulties faced by families of disabled individuals.

Social Security Administration Hotline

1-800-772-1213 or 1-800-325-0778 (TDD)

Spina Bifida Association of America

4590 MacArthur Blvd. N.W.W, Suite 250
Washington, DC 20067
1-800-621-3141

Offers educational materials, fund-raising for research, and newsletters.

Stuttering Foundation of America Hotline

3100 Walnut Grove Road, Suite 603
Memphis, TN 38111
1-800-992-9392

TRIPOD

1727 West Burbank Blvd.
Burbank, CA 91506
818-972-2080

A support and referral service for parents of children who are deaf or hearing impaired. The hotline responds to individual questions and educational brochures and videos are produced to help parents learn how to interact with children who are deaf.

Tourette Syndrome Association

4240 Bell Blvd
Bayside, NY 11361
718-224-2999

Provides educational materials, seminars, conferences, and support groups nationwide.

United States Department of Transportation

400 7th Street S W
Washington, DC 20590
703-821-0703

Enforces ADD provision that requires nondiscrimination in public and provide mass transportation system and services.

United States Employment Service

601 D Street NW
Washington, DC 20213

Administers the federal state employment service program.

Newsletters and Magazines

Be Stroke

National Stroke Association
96 Inverness Drive East
Engelwood, CO 80112
303-649-9299

Newsletter with information on stroke, prevention, treatment, rehabilitation, resources, and support for stroke survivors and caregivers.

Exceptional Parent Magazine

P.O. Box 3000 Dept. EP
Denville, NJ 07834-9919
1-800-562-1973

A monthly publication for parents of children with special needs.

Focus

National Council on Disability
1331 F Street, NW
Washington, DC 20004
202-272-20004

Reports on council news and information.

MDA News Magazine

Muscular Dystrophy Association
810 7th Avenue
New York, NY 10019

Presents many articles related to muscular dystrophy and other neuromuscular diseases including research and patient services.

MS Quarterly Report (Multiple Sclerosis)

Southeast Texas Chapter
National Multiple Sclerosis Society
8111 North Stadium Drive. Suite 100
Houston, TX 77054-4044
1-800-323-4873

Summarizes important advances in the diagnosis and treatment of MS.

Lifespan

National Council of Community Mental Care Council
12300 Twinbrook Parkway
Suite 320
Rockville, MD 20852
301-816-2633

Information on tax tips, insurance, medical care, and laws and regulations for people with mental disabilities.

Hospice Journal

National Hospice Organization
1700 Diagonal Road
Alexandria, VA 22314
703-243-5900

A quarterly publication dealing with all aspects of caring for terminally ill individuals.

Training Center for Independent Living

2323 South Sherpherd
Suite 1000
Houston, TX 77019

A national newsletter for independent living on laws, social issues, medicine, and more for the disabled persons.

Orphan Disease Update

National Organization for Rare Disorders
P.O. Box 8923, 100 Route 37
New Fairfield, CT 06812
203-746-6518

Newsletter offering information on rare disorders, treatment, disability, and rehabilitation.

SST and Social Security Disability

Protection and Advocacy, Inc.
11 East Adams Street
Chicago, IL 60603
312-341-0022

A booklet describing eligibility for benefits, the application and appeals process, work incentive programs, and findings on attorneys or advocates.

COMMUNITY ORGANIZATIONS & ACTIVITIES

Apache Arts & Crafts Center

761st & 62nd St, Fort Hood, TX
288-5152

Framing, multi-crafts, woodworking, and ceramics

Armed Services YMCA

415 North 8th Street
Killeen, TX 76541
254-634-5445
asymca@centreltx.net

A nonprofit organization which provides social, recreational, and educational programs and services for military personnel and their family members.

Girl Scout Bluebonnet Council

254-634-0683

Girl scouting is open to all girls and is pluralistic in nature. Offers programs which inspire girls with the highest ideals of character, conduct, patriotism, and service to others.

Bowling Center

Phantom Warrior Lanes
287-3424

Clement Boys and Girls Club

5207 E. Veterans Memorial Blvd.
Killeen, TX 76548
254-699-5808

Community Centers

Community Event Center, Bldg 50012
254-532-9261

Community Theater

Palmer Theater
287-3851

Cove-Killeen-Fort Hood Special Olympics Program

254-699-3479

Training and participation in competitive sports on all levels. Annual Special Olympics Awards Banquet - held each September.

Fort Hood Youth Service

Bronco Youth Center, 288-2214

High Chaparral, 287-5646

West Fort Hood, 288-9621

Youth Sports, 288-1398

Comanche, 287-5834

Walker Village, 287-4948

Summer Camp, 287-8029

EFMP participates with total inclusion. Provides low cost for youth at summer day camp with a wide variety of recreational, cultural, and educational activities.

Golf Courses

Clear Creek, 287-4130

Heart of Texas Boy Scouts

254-772-8932 or 254-547-4645

Mobilizes parents, community leaders, and organizations to develop desirable qualities of character, citizenship, and personnel fitness in our young people.

Library

Casey Memorial, 287-4921

Museums

1st Cavalry Division, 287-3626

4th ID Museum, 287-8811

Music Center

287-6337

Parks

Reservation Clerk, 287-8303

Skating Center

287-5623

Swimming Pools

Abrams Field House, 287-4648

Comanche Pool, 287-7544

West Fort Hood Pool, 288-9838

Theaters

Palmer Theater, 287-3066

Tours

Information, Tours, and Travel, 287-7310

Travel Camp

West Fort Hood, 288-9926

FREQUENTLY CALLED NUMBERS

American Red Cross – 287-0400/ 1-877-272-7337
Army Emergency Relief (AER) – 288-5003 / 287-8908 / 287-7292
Army Community Service (ACS) - 287-3726 or 287-4ACES
Central Counties Mental Health/Mental Retardation - 634-6042
Central Registration (CYS) – 287-8029
Childteam (early Childhood Intervention Program) - 547-5914
CIDC (Chronically Ill and Disabled Children) - 778-6744
Compassionate Reassignments - 287-7735
Dependent Travel - 287-6101
Exceptional Family Member Program (EFMP) - 287-6070
Families In Crisis, Inc - 634-2618
Guest House (Poxon) - 287-3067
Help Center of Killeen - 699-4357
Carl R. Darnall Army Medical Center (MEDCEN)
 Ambulance - 288-8111
 Brace Shop - 287-7717
 Bus Schedule (to San Antonio) - 288-8000
 Emergency Room - 288-8113
 Exceptional Family Member Program Clinic – 288-8099
 Central Appointments - 288-8888
 Child/Adolescent Services - 287-7650
 Community Health Nurse - 287-6789
 Community Mental Health Services - 287-5137
 Department of Psychiatry - 287-7623
 Hearing Conservation - 287-4374
 Information - 288-8000
 Inpatient Records - 288-8360
 Occupational Therapy - 288-8030
 Ophthalmology Clinic - 288-8490
 Orthopedic Appliance Facility - 287-7717
 Outpatient Records - 288-8160
 Pathology - 288-8200
 Pediatric Clinic - 288-8130
 Pharmacy Information - 288-8800
 Pharmacy Refill (24 hours) - 288-8911/8912
 Physical Therapy - 288-8041
 Radiology (X-Ray) - 288-8300
 Social Work Services (includes marriage and family counseling) - 288-6474
 Speech Therapy - 288-8457
 Well Baby Clinic - 288-8145
Housing - 287-4048
ID Card Section - 287-2518
Legal Aid Society of Central Texas - 778-9233
Quarters Repair - 532-3133
Ronald McDonald House - 770-0910

Fisher House –286-7927

SSI (Supplemental Security Income) - 1-800-772-1213

Texas Commission for the Blind - 772-9284

Texas Employment Commission - 526-4124

Texas Rehabilitation Commission - 634-2618

TRICARE - 532-0800

WIC – 532-8680

DEFINITIONS

Advocacy - Training parents to act on behalf of their children by providing information about their rights and responsibilities under the public laws and facilitating parent groups.

Health Related Services - Those services identified in the Individualized Education Plan (IEP) as being necessary for the child to receive an appropriate education. The Surgeon General is responsible for these services in support of DODDS overseas.

Hearing Impairments - Any permanent or fluctuating impairment(s) which affects educational performance/daily living.

Individualized Education Plan (IEP) – A written statement of the special education and multidisciplinary team in accordance with regulation. An IEP must be written for every exceptional child who is receiving special education and related services.

Medical Treatment Facility - Military health facility where the Soldier or family member normally goes for routine medical support.

Mental Retardation - Abnormal slowness of thought below normal intelligence, competence, slow in developmental progress ranging from very mild to extremely severe.

Multiple Impairments - A combination of physical, emotional, and/or mental disabilities.

Physical Disabilities - Such as spinal cord injury, multiple sclerosis, muscular dystrophy, cerebral palsy, etc., when severe enough to prevent participation in regular activities.

Visual Impairments - Partial or total loss of sight; ability to read may require special lenses, large print, or Braille.

GLOSSARY OF FREQUENTLY USED TERMS

Comprehensive Diagnosis and Evaluation (CD&E) - MHMR - a study including a sequence of observations and examinations of a person leading to findings and conclusions formulated jointly by a diagnostic and evaluation team. The study includes, but is not restricted to, a social and medical history; medical, neurological, audio logical, visual, educational, psychological, and sociological examinations; and an examination of the person's adaptive behavior.

Crisis Stabilization - MHMR - 24-hour residential services that are usually short-term and are offered to persons who are demonstrating psychiatric crisis.

Early Childhood Intervention Services (ECI) - MHMR - services to children ages 0 through 3 years with or at risk of developmental delay and their families.

Exceptional Family- Member Program (EFMP) - the EFMP, working in concert with other military and civilian agencies, is designed to provide a comprehensive, multidisciplinary approach for medical, educational, community support, housing, and personnel-type services for families with special needs.

Exceptional Family Member (EFM) - a family member with any physical, emotional, developmental, or intellectual disorder that limits the individual's capability to engage in pursuit with peers and requires special treatment, therapy, education, training, or counseling.

Family-Find - the ongoing process used by the Army to seek and identify families who have family members that might require specialized medical care, therapy, developmental services, or special education. Family-find activities include publicity, identification (screening), referral, and evaluation procedures.

Home and Community-Based Services (HCSI) - MHMR - supportive services to people with mental retardation living with their families or in their own homes financially supported by the individual's Supplemental Security Income (SSI) or other resources. The supportive services provided through the program are funded by state and matching Medicaid funds.

Individualized Education Program (IEP) - a written statement of the special education and related services for a handicapped child. It is developed by a multidisciplinary team. An IEP must be written for every EFM student who is receiving special education and related services.

Respite Care - a program providing a temporary rest period for family members responsible for regular care of an EFM.

Service Management - MHMR - an ongoing process, traditionally known as case management, which includes assessment, service plan development, arranging of comprehensive and unified services, follow-up, ongoing monitoring of an individual's or family's status and the services delivered, and periodic review, with any necessary revision of the service plan.

Special Education - specially designed instruction, at no cost to the family, to meet the unique educational needs of an EFM. Special education includes education provided in school, at home, in a hospital, or in an institution, physical education programs, and vocational education program.

TTD: a telephone system for the deaf which connects to any regular phone. Components are a keyboard and visual display. Both caller and person called must have a TTD system to communicate.

Acronyms

Acronym	Full Name or Description
AACTE	American Association of Colleges for Teacher Education
AAFP	American Academy of Family Physicians
AAMFT	American Association for Marriage and Family Therapy
AAMR	American Association on Mental Retardation
AAP	American Academy of Pediatrics
AAUAP	see AUCD below
ABA	Applied Behavior Analysis
ACF	Administration for Children and Families (HHS)
ADA	Americans with Disabilities Act
ADD	Attention Deficit Disorder
ADHD	Attention Deficit Hyperactivity Disorder
ADR	Alternative Dispute Resolution
AHA	American Hospital Association
AMA	American Medical Association
AMCHP	Association of Maternal and Child Health Programs
ANA	American Nurses Association
AOTA	American Occupational Therapy Association
APA	American Psychological Association
APHA	American Public Health Association
APR	Annual Performance Report
APTA	American Physical Therapy Association
Arc	The Arc (formerly the Association for Retarded Citizens)
ARCH	Access to Respite Care and Help
ASD	Autism Spectrum Disorders
ASHA	American Speech-Language-Hearing Association, also American School Health Association
ASTHO	Association of State and Territorial Health Officers
AT	Assistive technology
AUCD	Association of University Centers on Disabilities (formerly American Association of University Affiliated Programs)
AYP	Annual Yearly Progress
BD	Behavioral disorder
BIE	Bureau of Indian Education (U.S.)
CADRE	Consortium for Appropriate Dispute Resolution in Special Education
CAP	Community Alternative Program
CAPTA	Child Abuse Prevention and Treatment Act
CATCH	Community Access to Child Health

CCD	Consortium for Citizens with Disabilities
CCSSO	Council of Chief State School Officers
CDA	Child Development Associate
CDC	Centers for Disease Control and Prevention (HHS)
CDF	Children's Defense Fund
CDS	Center for Developmental Science (at UNC)
CEC	Council for Exceptional Children
CELL	Center for Early Literacy Learning
CFR	Code of Federal Regulations
CHADD	Children and Adults with Attention-Deficit/Hyperactivity Disorders
CHAMPUS	see TRICARE
CICCC	Council of Interagency Coordinating Council Chairs
CIFMS	Continuous Improvement and Focused Monitoring System
CIMP	Continuous Improvement Monitoring Process
CMS	Centers for Medicare and Medicaid Services (HHS) (formerly HCFA, Health Care Financing Administration)
CONUS	Continental U.S.
COP	Community of Practice
COPSSE	Center on Personnel Studies in Special Education
COSSMHO	National Coalition of Hispanic Health and Human Services Organizations
CP	Cerebral Palsy
CPRC	Community Parent Resource Centers
CRS	Congressional Research Service (U.S. Library of Congress)
CSAP	Center for Substance Abuse Prevention (HHS)
CSEF	Center for Special Education Finance
CSEFEL	Center on the Social and Emotional Foundation for Early Learning
CSHCN	Children with Special Health Care Needs
CSHN	Children with Special Health Needs
CSPD	Comprehensive System of Personnel Development
CWLA	Child Welfare League of America
DAC	Data Accountability Center
DAP	Developmentally appropriate practice
DD	Developmental delay, also Developmental disabilities
DDRC	Developmental Disabilities Research Centers (NICHD) (formerly Mental Retardation Research Centers)
DEC	Division of Early Childhood (of the CEC)
DIBELS	Dynamic Indicators of Basic Early Literacy
DR	Dispute Resolution
EC	Early childhood
ECO	Early Childhood Outcomes Center
ECSE	Early childhood special education
ED	U.S. Department of Education

EDEN	Education Data Exchange Network
EDGAR	Education Department General Administrative Regulations
EHDI	Early Hearing Detection and Intervention
EHS	Early Head Start
EI	Early intervention
EIP	Early Intervention Program
EPSDT	Early Periodic Screening, Diagnosis, and Treatment (Medicaid program)
ERIC	Educational Resources Information Center
ESEA	Elementary and Secondary Education Act
FAPE	Free Appropriate Public Education
FAS	Freely Associated States of the Pacific, also Fetal Alcohol Syndrome
FERPA	Family Educational Rights and Privacy Act
FICC	Federal Interagency Coordinating Council
FTE	Full Time Equivalency
GAO	U.S. General Accountability Office
GCS	Grants and Contracts Services
GEPA	General Education Provisions Act
GPRA	Government Performance and Results Act
GSEG	General Supervision Education Grant (OSEP)
HCFA	see CMS
HHS	U.S. Department of Health and Human Services
HIAA	Health Insurance Association of America
HIPAA	Health Insurance Portability and Accountability Act
HMHB	Healthy Mothers, Healthy Babies Coalition
HMO	Health maintenance organization
HOUSSE	High Objective Uniform State Standards of Evaluation
HQT	Highly Qualified Teacher
HRSA	Health Resources and Services Administration (HHS)
IASA	Improving America's Schools Act
ICC	Interagency Coordinating Council
ICF	International Classification of Functionality
IDEA	Individuals with Disabilities Education Improvement Act
IEE	Independent Education Evaluation
IEP	Individualized Education Program
IES	Institute of Education Sciences
IEU	Intermediate Education Unit
IFSP	Individualized Family Service Plan
IGDI	Individual Growth and Development Indicator
IHE	Institution of Higher Education
IHS	Indian Health Service (HHS)
IPP	Individual Program Planning
ITCA	Infants and Toddlers Coordinators Association

LD	Learning disability
LDA	Learning Disabilities Association
LEA	Local Education Agency
LEND	Leadership in Neurodevelopment and Related Disabilities
LEP	Limited English proficiency
LICC	Local Interagency Coordinating Council
LRE	Least restrictive environment
MCH	
MCHB	Maternal and Child Health Bureau (HHS)
MDBDF	March of Dimes Birth Defects Foundation
MOU	Memorandum of Understanding
MPRRC	Mountain Plains Regional Resource Center
MR	Mental retardation
MSIP	Monitoring and State Improvement Planning Division of OSEP
MSRRC	Mid-South Regional Resource Center
NACHRI	National Association of Children's Hospitals and Related Institutions
NAECS/SD E	National Association of Early Childhood Specialists in State Departments of Education
NAEYC	National Association for the Education of Young Children
NAFCC	National Association for Family Child Care
NAS	National Academy of Sciences
NASBE	National Association of State Boards of Education
NASDSE	National Association of State Directors of Special Education
NASMHPD	National Association of State Mental Health Program Directors
NASMRPD	National Association of State Mental Retardation Program Directors
NASN	National Association of School Nurses
NASP	National Association of School Psychologists
NCCIC	National Childcare Information Center
NCEMCH	National Center for Education in Maternal and Child Health
NCLB	No Child Left Behind
NCRECE	National Center for Research in Early Childhood Education
NCRRC	North Central Regional Resource Center
NCSL	National Conference of State Legislatures
NEA	National Education Association
NECTAC	National Early Childhood Technical Assistance Center
NEILS	National Early Childhood Intervention Longitudinal Study
NERRC	Northeast Regional Resource Center
NGA	National Governors Association
NICHCY	National Information Center for Children and Youth with Disabilities
NICHHD	National Institute of Child Health and Human Development (HHS)
NICU	Neonatal Intensive Care Unit

NIDRR	National Institute of Disabilities and Rehabilitation Research (OSERS)
NIH	National Institute of Health (HHS)
NIMAS	National Instructional Materials Accessibility Standard
NIMH	National Institute of Mental Health (HHS)
NORD	National Organization for Rare Disorders
NPDCI	National Professional Development Center on Inclusion
NPRM	Notice of Proposed Rule Making
OERI	Office of Educational Research and Improvement (ED)
OHDS	Office of Human Development Services
OMB	U.S. Office of Management and Budget
OSEP	Office of Special Education Programs (in OSERS)
OSERS	Office of Special Education and Rehabilitative Services (ED)
OT	Occupational therapy
PACER	Parent Advocacy Coalition for Educational Rights
PART	Program Assessment Rating Tool
PBS	Positive Behavior Support
PCC	Parent and Child Center (Head Start)
PDDMI	Performance Based Data Management Initiative
PDD-NOS	Pervasive developmental disorder - Not otherwise specified
PEELS	Pre-Elementary Education Longitudinal Study
PPO	Preferred Provider Organization
PT	Physical therapy
PTI	Parent Training and Information Centers
R&R	Resource and Referral
RFP	Request for proposals
RPTAC	Regional Parent Technical Assistance Centers
RRCP	Regional Resource Center Program
RTI	Response-to-Intervention
RTP	Research to Practice Division of OSEP
SCHIP	State Children's Health Insurance Program
SCSHCN	Services for Children with Special Health Care Needs
SCSHN	Services for Children with Special Health Needs
SEA	State Education Agency
SECCS	State Early Childhood Comprehensive System Initiative (MCH)
SEELS	Special Education Elementary Longitudinal Study
SEPPIE	Special Education Program for Pacific Island Entities
SERRC	Southeast Regional Resource Center
SICC	State Interagency Coordinating Council
SIG	State Improvement Grant
SIP	State Improvement Plan
SKIP	Sick Kids Need Involved People
SLD	Specific Learning Disabilities

SLP	Speech-language pathologist
SPDG	State Personnel Development Grant
SPeNSE	Study of Personnel Needs in Special Education
SPP	State Performance Plan
SPRANS	Special Projects of Regional and National Significance (MCHB)
SSA	Social Security Administration
SSI	Supplemental Security Income
STOMP	Specialized Training of Military Parents
T/TA	Training and Technical Assistance
TA	Technical assistance
TACC	Technical Assistance Coordination Center
TACSEI	Technical Assistance Center on Social Emotional Intervention for Young Children
TANF	Temporary Assistance to Needy Families (HHS)
TASH	The Association for Persons with Severe Handicaps
TDD/TTY	Telecommunication Device for the Deaf/Teletype
TRACE	Tracking, Referral and Assessment Center for Excellence
TRICARE	Military Health Care System (formerly Civilian Health and Medical Program of the Uniformed Services or CHAMPUS)
U.S.C.	United States Code (Laws)
UAP	See UCEDD
UCEDD	University Centers for Excellence in Developmental Disabilities Education, Research and Service (formerly University Affiliated Programs or UAPs)
UCP	United Cerebral Palsy
WIC	Women, Infants and Children (Special Supplemental Food Program)
WRRC	Western Regional Resource Center
WWC	What Works Clearinghouse

