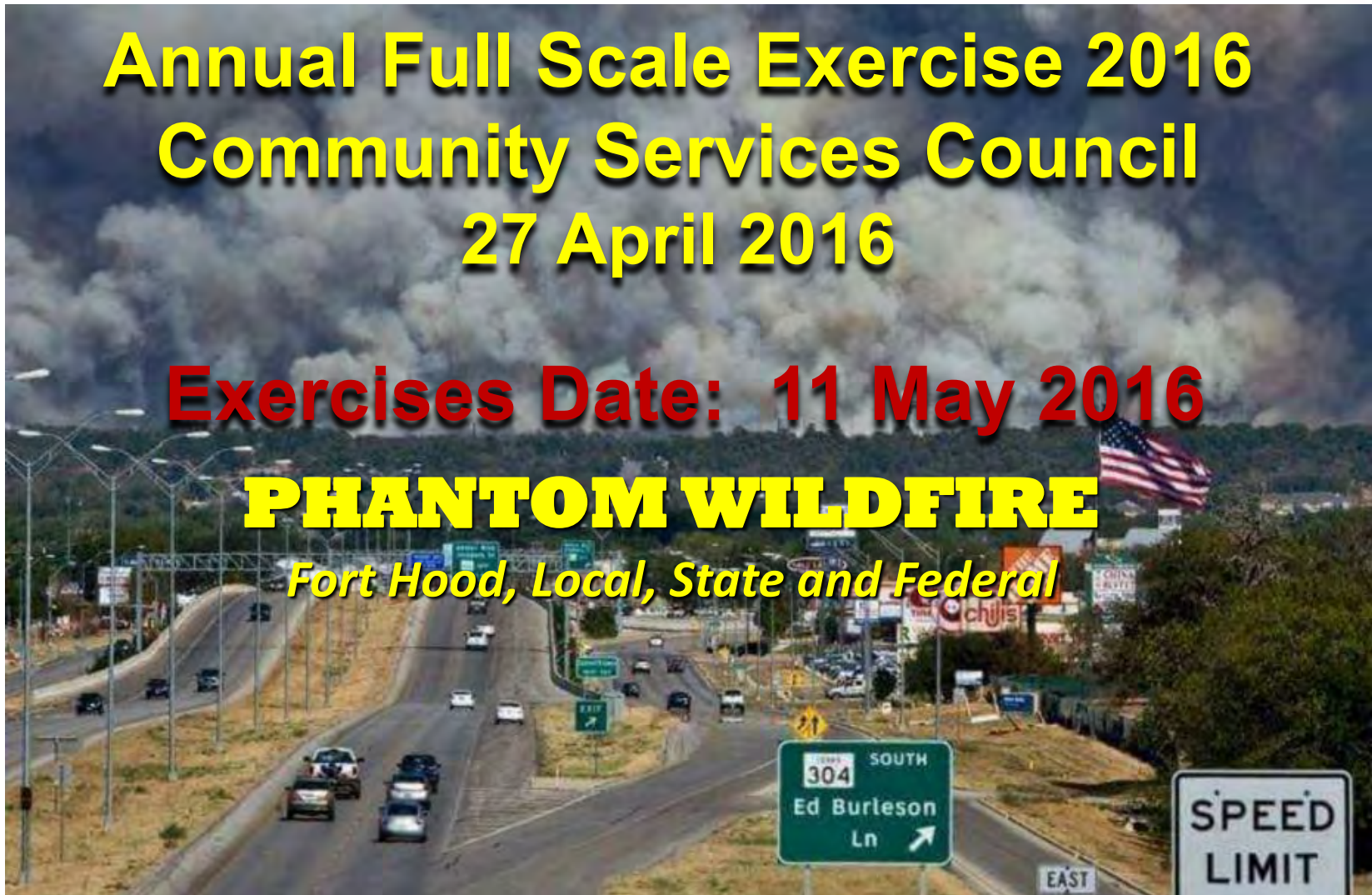


Annual Full Scale Exercise 2016 Community Services Council 27 April 2016

Exercises Date: 11 May 2016

PHANTOM WILDFIRE

Fort Hood, Local, State and Federal



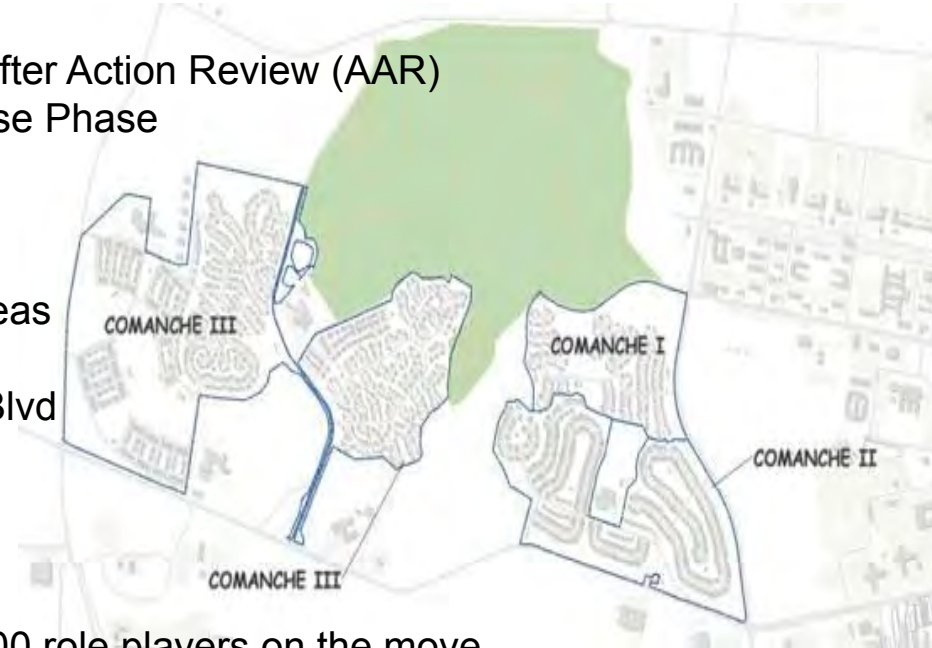
UNCLASSIFIED



Exercise Concept Overview



- **Who:** USAG Fort Hood (FH) conducts a partnership exercise with participation from III Corps, Partners in Excellence and neighboring community agencies
- **What:** A two day exercise at FH followed by an After Action Review (AAR)
 - Day 1 – Full Scale Exercise (FSE) Response Phase
 - Day 2 – FSE Recovery Phase
- **Where:** FH main cantonment area including
 - Comanche I, II and III E / III W housing areas
 - Audie Murphy Middle School football field
 - Corner of Clarke Rd and Tank Destroyer Blvd
 - Old AAFES parking lot on Clear Creek Rd
 - Abrams Gym
 - CRDAMC and local hospitals
- **When:** 11 May 2016 (Wednesday) starting at 0600 role players on the move
 - End ~ 1630 hrs 11 May 2016
- **How:**
 - FSE16 media marketing strategy – FH Housing / CLNCOs; Sentinel; CSC; Social Media
 - Incident event begins 0900 hrs with activation of “Giant Voice” emergency test message



UNCLASSIFIED

Scenario – 11 May 2016



A wildfire results in damage to facilities and Family quarters in Comanche I, II and III E villages and the evacuation of over 300 Soldiers and Family members.

- Soldiers and Civilians role playing as casualties
- Role players evacuated / self-evacuate to Emergency Shelter
- Emergency Shelter established at Abrams Gym
 - Abrams Gym closed 11 May 16 except for lifeguard training



UNCLASSIFIED



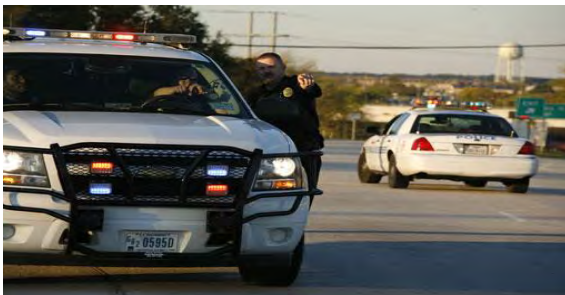
SOLDIERS ★ FAMILIES ★ ARMY CIVILIANS

ARMY STRONG^{BM}

During the Exercise

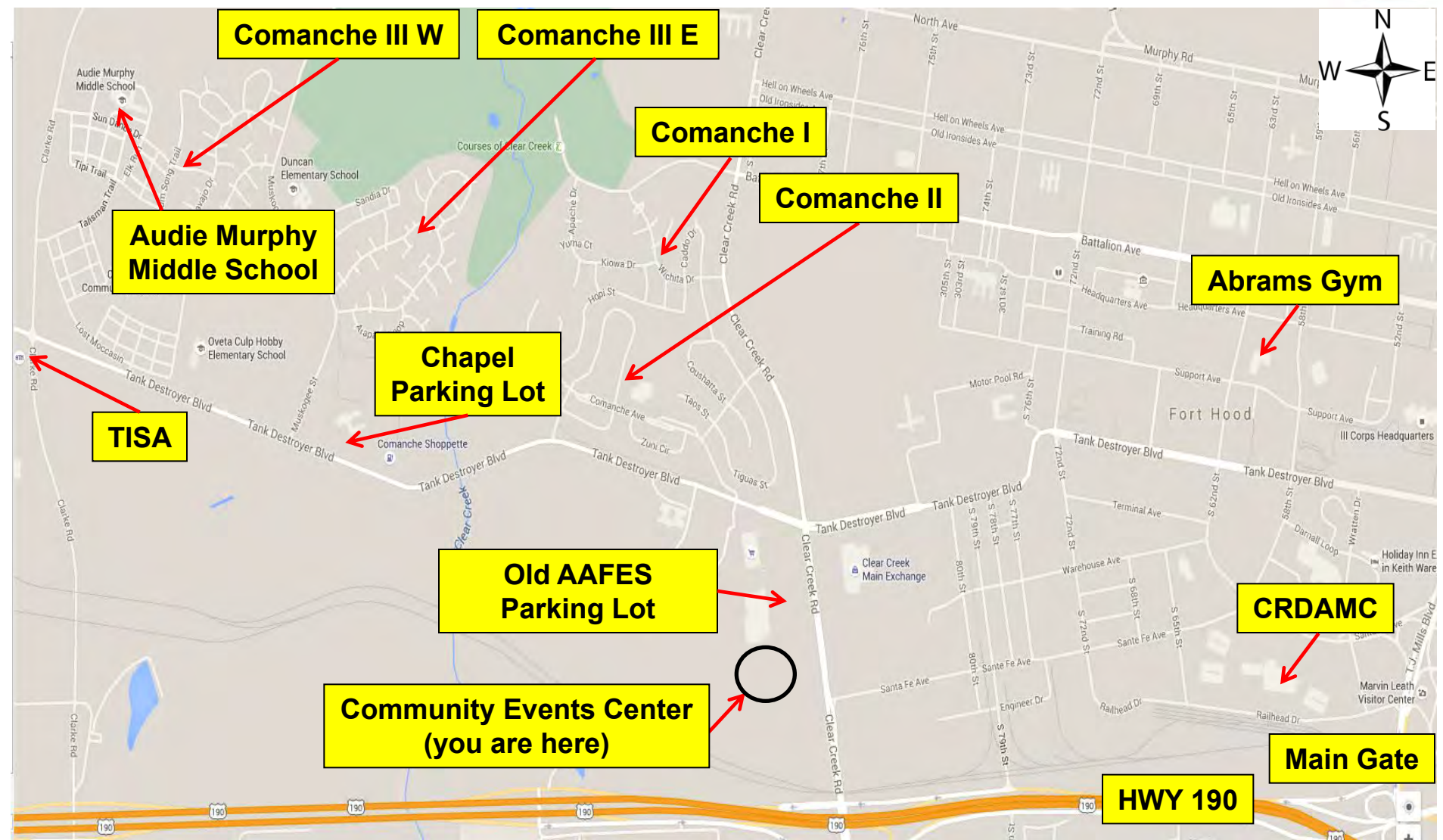


- Emergency response procedures 11 May 2016
- Incident event begins 0900 hrs with activation of “Giant Voice” emergency test messages
 - Announcements preceded and followed by phrases such as “EXERCISE, EXERCISE, EXERCISE”
- Multiple incident sites with multiple casualty role players with mock injuries
 - Role players with simulated injuries vicinity Muskogee Street and Tank Destroyer Blvd
 - Role players with simulated injuries vicinity Comanche I, II, and IIIE
 - Role players with simulated injuries at CRDAMC and local hospitals
- Emergency response vehicles at incident sites
- Units / Agencies activate Emergency Action Plan (EAP) / Shelter-in-Place (SIP)
- MASCAL response by CRDAMC and local hospitals
- In the event of an actual emergency, exercise play will immediately halt and emergency personnel will respond accordingly



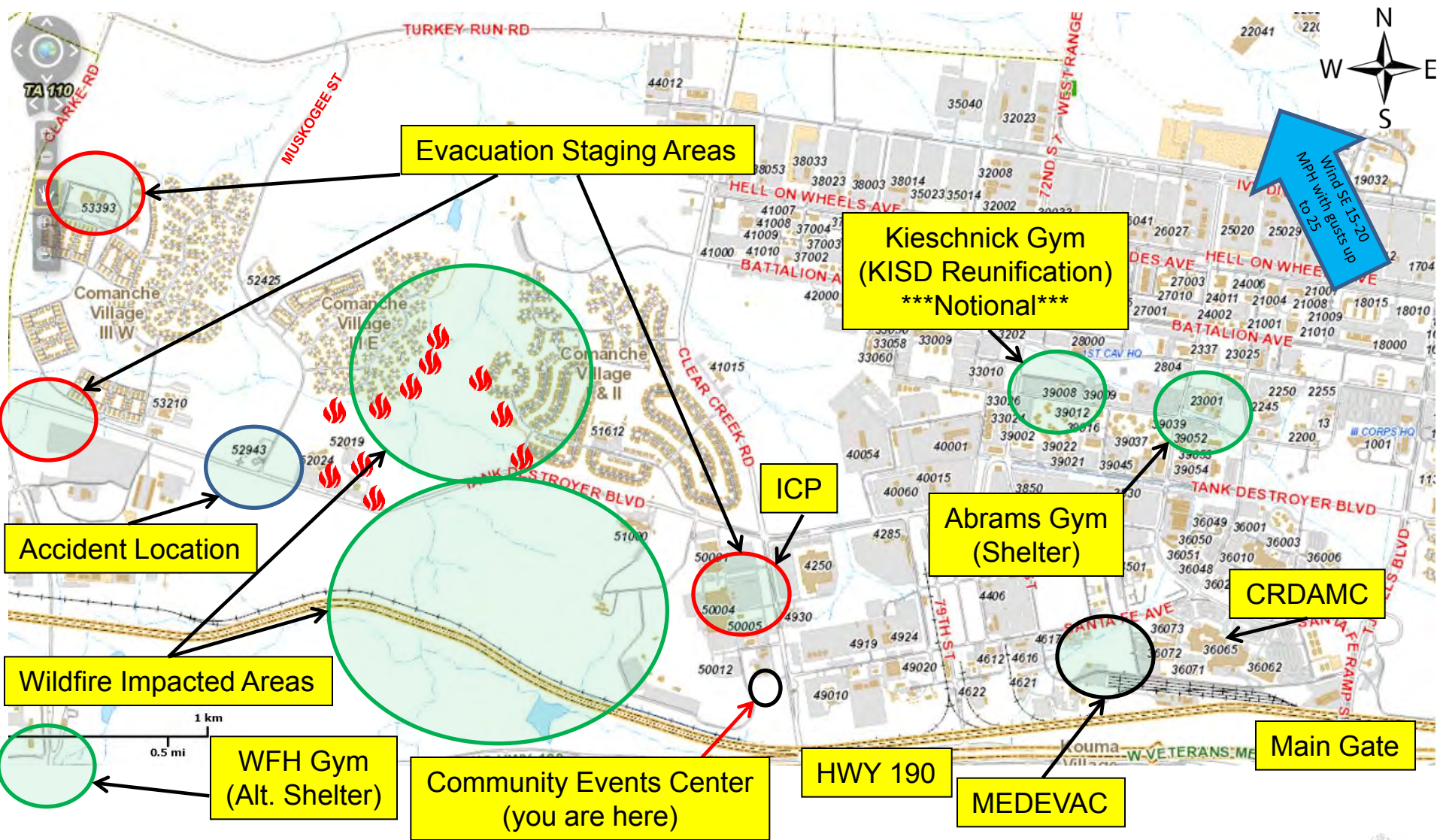
UNCLASSIFIED

Exercise Site Locations



UNCLASSIFIED

Wildfire Scenario Sites



 Structural damage

UNCLASSIFIED



UNCLASSIFIED